



DATAHQ

dataHQ user guide

This document explains the use and features included in the dataHQ End of day data software offered via www.datahq.com.au



dataHQ the "First Time"

After the install procedure is complete, double click on the dataHQ black and white desktop icon.

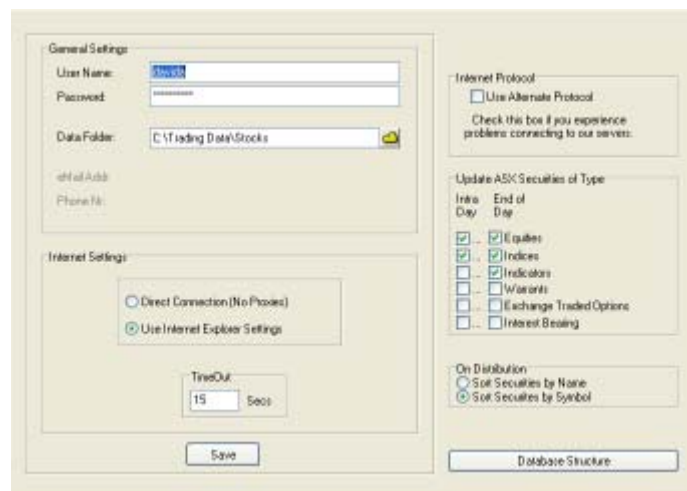
dataHQ will show the message below and open the "configuration" page.



Your dataHQ details should be entered into the "Configuration" page.

The details required are:

- ✓ Your dataHQ username.
- ✓ Your dataHQ password.
- ✓ The type of ASX securities you wish to update.
- ✓ The sort order for the database.



After entering your details click on the "Save" button.

Updating the Data History

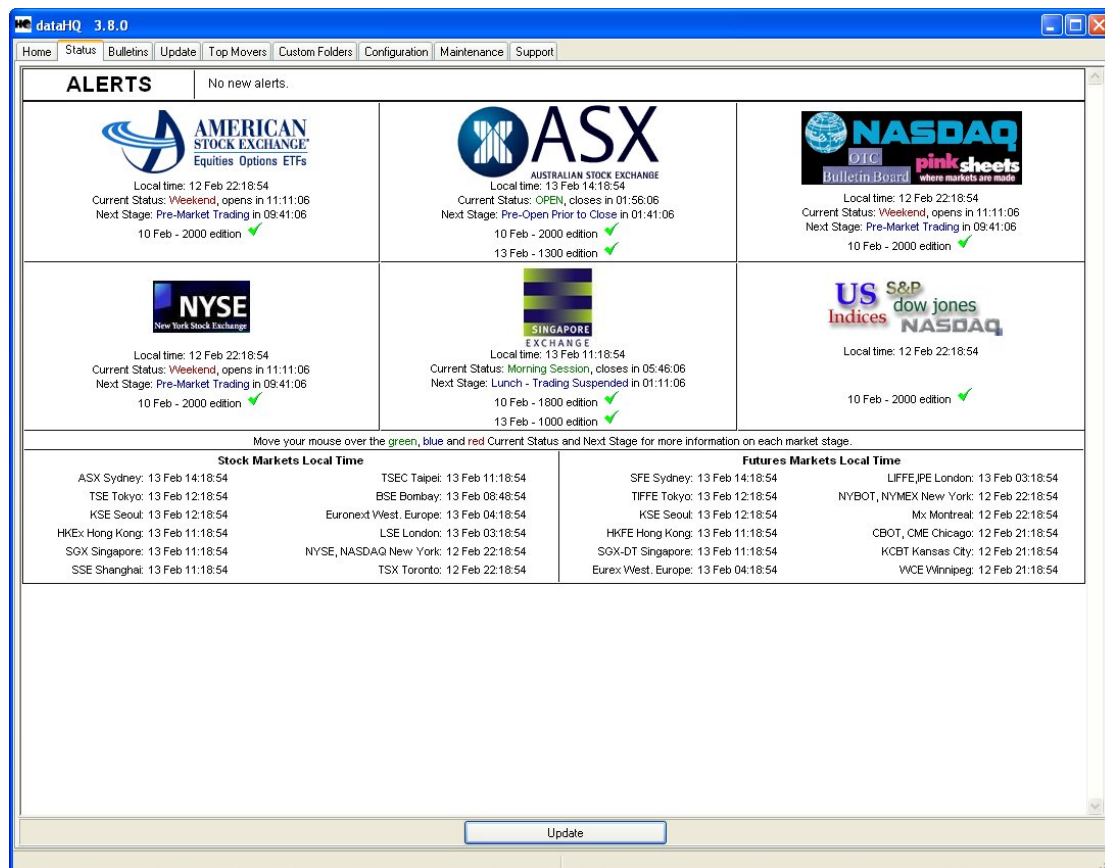
Before updating the historical database ensure that:

- ✓ Metastock or any other charting packages are **not** running.
- ✓ The computer is connected to the Internet.

The dataHQ program will know the date the data history goes to and will download all data from that date onwards.

To update the data

Start dataHQ, the "Status" page will be shown; this details the most recent data edition that is currently available.



To update the data history click on the "update" button, dataHQ will switch to the "update" page where the update process can be monitored.

When the update is complete the status bar will display "Procedures Complete" and the "Exit" button will be enabled.

The program can then be shut down.



Default install paths

When dataHQ is installed the default folders are set as follows:

- The dataHQ update program (dataupdater.exe) - C:\Program Files\Trading Applications\bin
- Data Backups - C:\Program Files\Trading Applications\DataBackup
- The ASX data - C:\Trading Data\Stocks\ASX
- The SGX data - C:\Trading Data\Stocks\SGX
- The US data - C:\Trading Data\Stocks\US
- The World Indices data - C:\Trading Data\Stocks\ World Indices

When the data history is reinstalled the original folder is renamed to foldername(old) eg. if ASX data is reinstalled your current data folder is renamed to "ASX(old)". If you find these folders on your system, they can be deleted at your convenience.



Download times

The ASX data history can be updated:

- For end of day subscribers:
 - ✓ At any time of the day for previous days data.
 - ✓ After 4.35 pm EST for the current day's first End of Day download.
 - ✓ After 8.30 pm EST for the current day's final End of Day download.

- If you have subscribed to the snapshot updates you can update the data:
 - ✓ After 11:20, 12:20, 13:20, 14:20, 15:20 EST.

You can update after midnight EST if you subscribe to the ASX Next day subscription.

If you forget to update the data for a while, dataHQ will automatically download the data you are missing (you will be able to download approx 3 months worth of data from our data servers). If you have not updated for more than 3 months then download and install a new history file as described earlier).

Please note the times shown above may vary from time to time as unavoidable delays may occur. Use the times as a guide only.

Maintenance

This section is used to download data again, normally this will not be necessary, but can be used if you change the update options for instance.

To Re-Distribute data:

- ✓ Connect to the Internet.
- ✓ Choose the required date from the drop down list then click on the Re-Distribute" button.



The dataHQ program will download and re-distribute data from the date you chose onwards up to the current day (depending on the time limits as previously detailed).

If you require many months worth of data re-distributed, it may be quicker to download and install the latest data history file.

You can also backup and restore the data history.

To create a backup (after updating the data) click the "Backup data" button. The data history is copied to the "Backup Folder" location (which can be changed if required).

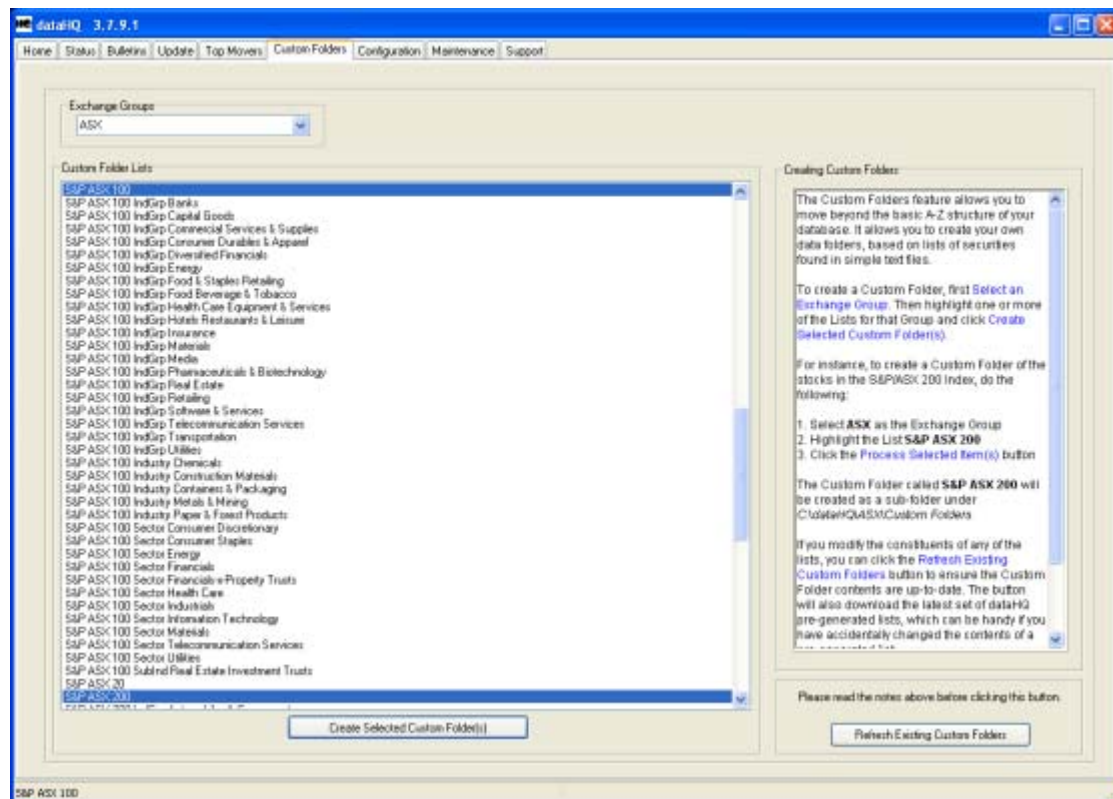
To restore the data click the "Restore Data" button, choose the backup file you want restored to your hard drive.

The filename contains the date the backup was created, this allows you to stipulate which backup to restore from.

Custom Folders

DataHQ allows you to create custom folders, which are used to organise the data differently to the default structure.

If you are interested in seeing the companies that make up the S&P ASX 200 for instance, you can create a custom folder that places all the constituent shares in one folder.



To create a custom folder, open the dataHQ custom folder page.

Select the Exchange you want the folder for (your subscription must include any Exchange you choose, otherwise you will not be able to create those folders).

Once you have selected an Exchange, highlight the folders you want to create, and click on the "Create Selected Custom folders" button.

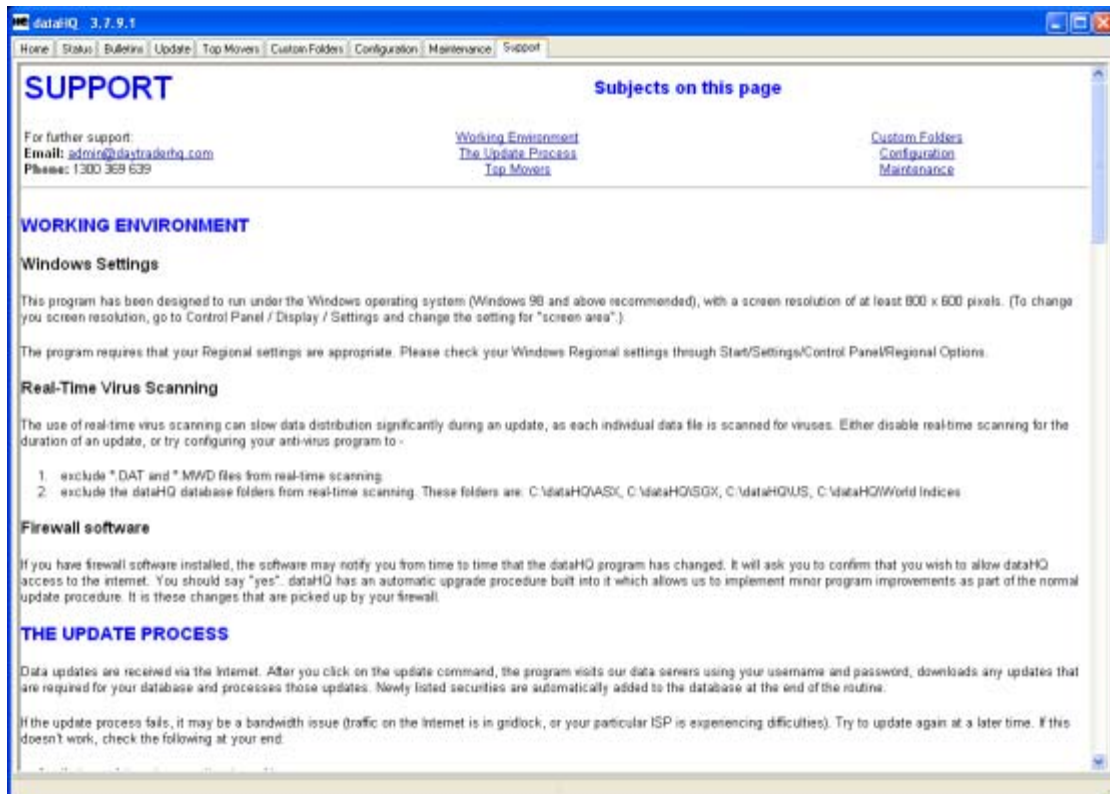
The status bar will show the process.

ASX Custom folders are found at C:\Trading Data\Stocks\ASX\Custom Folders
 SGX Custom folders are found at C:\Trading Data\Stocks\SGX\Custom Folders
 Etc.

If custom folders are no longer required they can be deleted.

Support

The support page shown below offers information about the data service and contact details should you want to contact us about the data service.



DISCLAIMER

Any financial product information contained in this document is general information only and has been prepared without considering your objectives, financial situation or needs. Before making any investment decision a prospective investor needs to consider, with or without the assistance of a Financial Adviser, whether the advice is appropriate for them.

Capital Intelligence Limited believes that any information or advice contained in this document was accurate when issued.

Capital Intelligence Limited - Australian Financial Services licence No: 226699